

1800 SERIES - WINDOWS						
Typical sizes min and max						
MARK	TYPE	WIDTH		HEIGHT		MAX. WEIGHT
		Min	Max	Min	Max	
A	Single Casement	13 1/2" (337mm)	41" (1041mm)	15 1/2" (394mm)	84" (2134mm)	150 lbs (68.04 kg)
B	Awning	12" (305mm)	60" (1524mm)	15 1/2" (394mm)	54" (1372mm)	95 lbs (43.1 kg)
-	Casement Egress Hinge	13 1/2" (337mm)	35 1/2" (895mm)	15 1/2" (394mm)	83 1/2" (2115mm)	67 lbs (30.4 kg)
C	Fixed	12" (305mm)	119 1/2" (3029mm)	12" (305mm)	119 1/2" (3029mm)	-
D	Small Picture	8 1/2" (210mm)	119 1/2" (3029mm)	8 1/2" (210mm)	119 1/2" (3029mm)	-

Notes:
 All dimensions are from edge of the frame to edge of the frame
 Max 215" overall dimension for mullied units
 Max 119 1/2" overall dimension for single frame with mullion



Title:
 1800 Series uPVC Window

Drawing:
 Elevations

Drawn: AM	Date: 2021-09-30	Scale: 1:2
Drawing no. 1	Revision no. 1	

Technical drawing of a window cross-section showing dimensions and labels:

- Top horizontal dimension: 86 [3 3/8"]
- Top left horizontal dimension: 27 [1 1/16"]
- Top right horizontal dimension: 59 [2 5/16"]
- Left vertical dimension (outer): 86 [3 3/8"]
- Left vertical dimension (inner): 67 [2 5/8"]
- Right vertical dimension: 67 [2 5/8"]
- Inner left vertical dimension: 18 [3/4"]
- Labels: EXTERIOR (bottom left) and INTERIOR (bottom right)

Technical drawing of the 1000 Series window frame showing dimensions in inches and millimeters:

- Overall height: 86 [3 5/8"]
- Height of the upper sash: 67 [2 5/8"]
- Height of the lower sash: 69 [2 3/4"]
- Height of the bottom rail: 18 [3/4"]
- Overall width: 86 [3 3/8"]
- Width of the lower sash: 59 [2 5/16"]
- Width of the bottom rail: 27 [1 1/16"]

Technical drawing of the 8800 Series window frame showing cross-sections for exterior and interior views. The drawing includes dimensions in inches and millimeters.

Top View Dimensions:

- Overall width: 86 [3 3/8"]
- Left side width: 27 [1 1/16"]
- Right side width: 59 [2 5/16"]

Left Side View Dimensions (Exterior):

- Overall height: 85 [3 3/8"]
- Inner height: 67 [2 5/8"]
- Inner height (lower section): 18 [3/4"]

Right Side View Dimensions (Interior):

- Overall height: 67 [2 5/8"]

Bottom View Dimensions (Exterior):

- Overall height: 161 [6 5/16"]
- Inner height: 67 [2 5/8"]
- Inner height (lower section): 26 [1"]

Bottom View Dimensions (Interior):

- Overall height: 124 [4 7/8"]

The drawing also includes labels for "EXTERIOR" and "INTERIOR" views, and a central section showing the window pane and sash.

Technical drawing of the 1000 Series window frame showing dimensions in inches and millimeters:

- Overall height: 86 [3 3/8"]
- Height to top of frame: 67 [2 5/8"]
- Height to bottom of frame: 19 [3/4"]
- Overall width: 86 [3 3/8"]
- Width to side of frame: 59 [2 5/16"]
- Width to bottom of frame: 27 [1 1/16"]

Technical drawing of a window frame cross-section. The drawing shows a multi-chambered profile with various internal features and dimensions. The dimensions are as follows:

- Top horizontal dimension: 67 [2 5/8"]
- Left vertical dimension (total): 86 [3 3/8"]
- Left vertical dimension (upper section): 59 [2 5/16"]
- Bottom left vertical dimension: 27 [1 1/16"]
- Bottom horizontal dimension (left section): 18 [3/4"]
- Bottom horizontal dimension (right section): 67 [2 5/8"]
- Bottom horizontal dimension (total): 85 [3 3/8"]

Technical drawing of the 3000 Series window head assembly. The drawing shows a cross-section of the window head with a sash. Dimensions are provided in inches and millimeters:

- Overall height: 56 [2 3/16"]
- Overall width: 86 [3 3/8"]
- Distance from left edge to center of sash: 27 [1 1/16"]
- Distance from center of sash to right edge: 59 [2 5/16"]
- Height of the top sash: 30 [1 3/16"]



EUROLINE
WINDOWS

Title:

1800 Series uPVC Window

Drawing:

Apple Glaze

Drawn:
AM

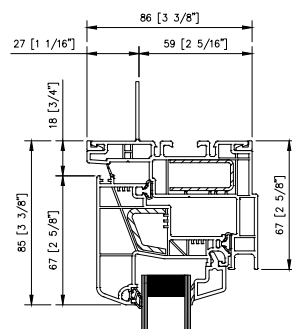
Date:	2021-09-30
-------	------------

Scale: 1:2

Drawing no.	2
-------------	---

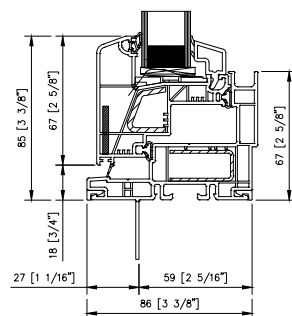
Revision no	1
-------------	---

1 1800 OPERABLE - HEAD



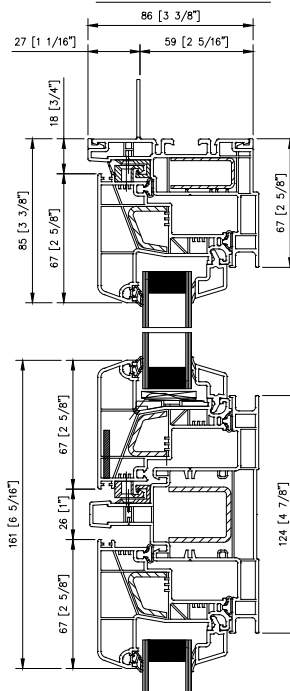
EXTERIOR

INTERIOR



2 1800 OPERABLE - SILL

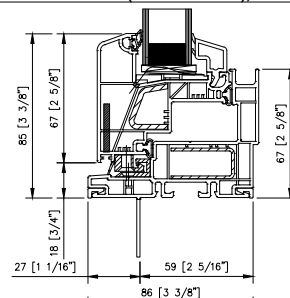
3 1800 FIXED - HEAD



EXTERIOR

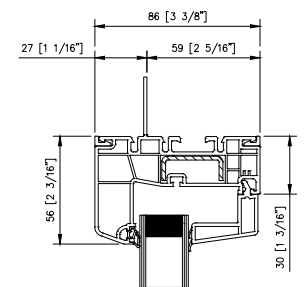
INTERIOR

4 1800 FIXED/FIXED (with T-Mullion), include on TG



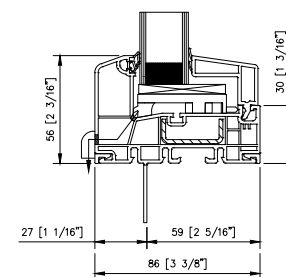
5 1800 FIXED - SILL

6 1800 SMALL PICTURE - HEAD

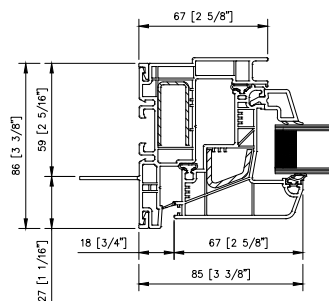


EXTERIOR

INTERIOR

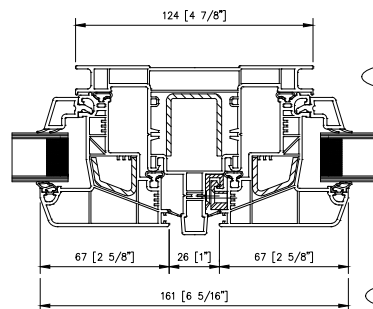


7 1800 SMALL PICTURE - SILL



8 1800 OPERABLE - JAMB

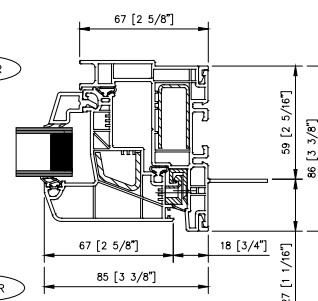
INTERIOR



EXTERIOR

INTERIOR

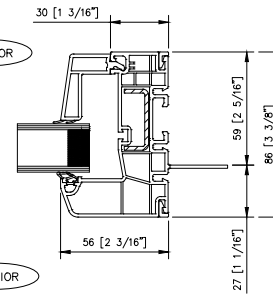
EXTERIOR



10 1800 FIXED - JAMB

INTERIOR

EXTERIOR



11 1800 SMALL PICTURE - JAMB



Title:
1800 Series uPVC Window

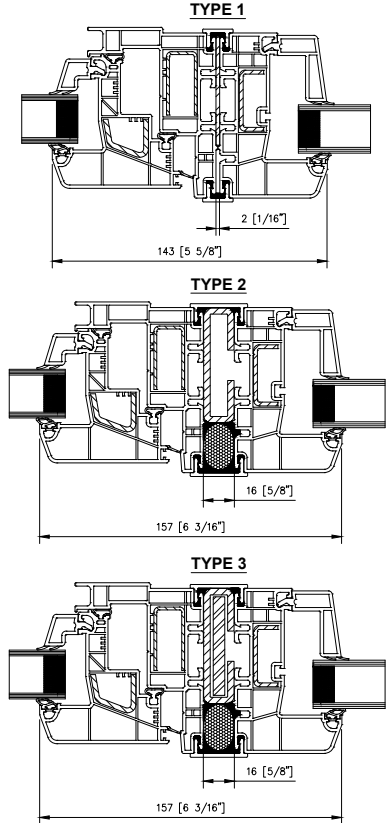
Drawing:
Double Glaze

Drawn: AM	Date: 2021-09-30	Scale: 1:2
Drawing no. 3		Revision no. 1

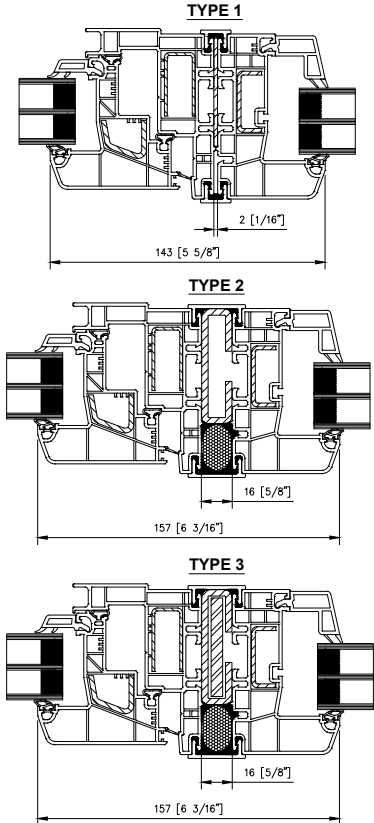
Note: If the height is above 77" or width is above 119", the unit is coupled using a steel profile. The type will depend on the calculation chart. This statement is a minimum requirement and specific geographic wind-load calculations may apply.

Connection type	lx	ly
T-Mullion	7.5 cm ⁴	3.4 cm ⁴
Type 1	14.4 cm ⁴	5.8 cm ⁴
Type 2	30.4 cm ⁴	7.14 cm ⁴
Type 3	36.65 cm ⁴	7.23 cm ⁴
Type 8	70 cm ⁴	26 cm ⁴

12 1800 OPERABLE/SMALL PICTURE - JAMB



12 1800 OPERABLE/SMALL PICTURE - JAMB

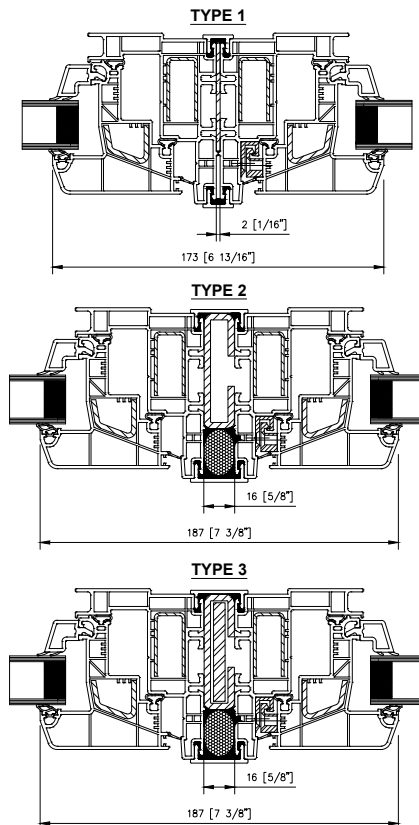


Title:		
1800 Series uPVC Window		
Drawing:		
Mulled connection details Operable/Small Picture		
Drawn:	Date:	Scale: 1:2
AM	2021-09-30	
Drawing no.	Revision no.	
4	1	

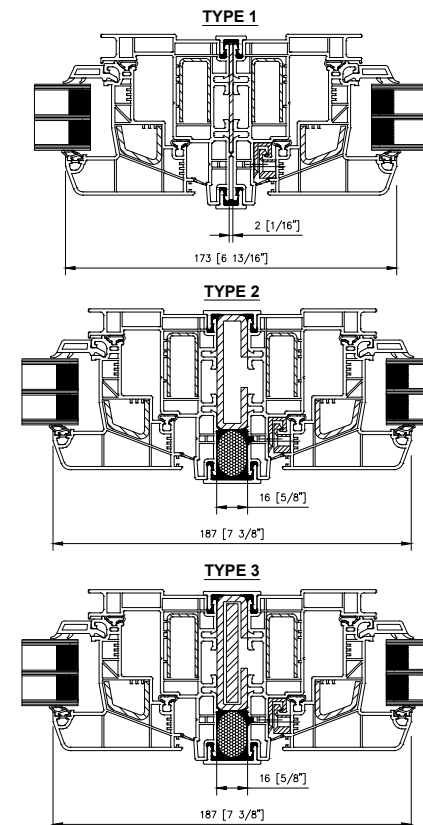
Note: If the height is above 77" or width is above 119", the unit is coupled using a steel profile. The type will depend on the calculation chart. This statement is a minimum requirement and specific geographic wind-load calculations may apply.

Connection type	Ix	Iy
T—Mullion	7.5 cm ⁴	3.4 cm ⁴
Type 1	14.4 cm ⁴	5.8 cm ⁴
Type 2	30.4 cm ⁴	7.14 cm ⁴
Type 3	36.65 cm ⁴	7.23 cm ⁴
Type 8	70 cm ⁴	26 cm ⁴

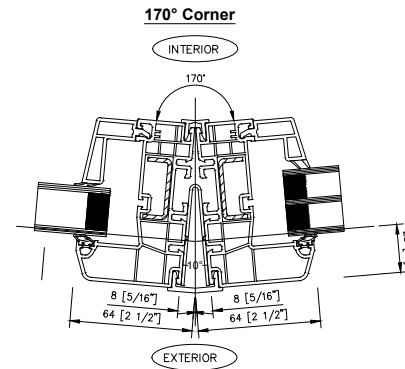
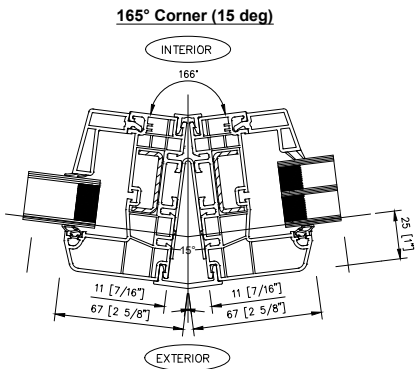
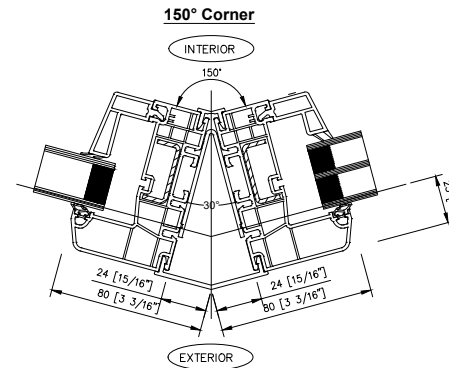
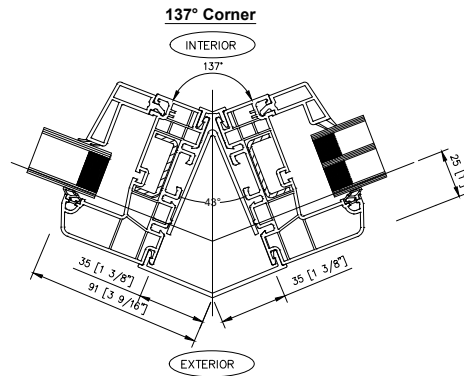
12 1800 OPERABLE/FIXED - JAMB



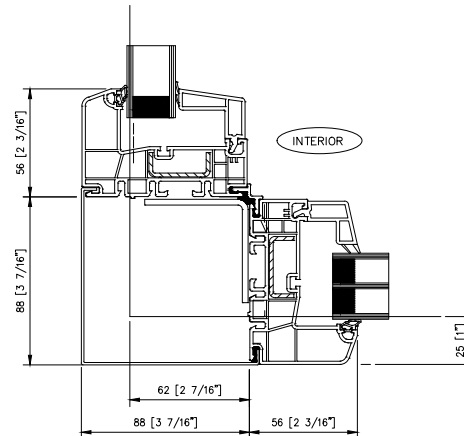
12 1800 OPERABLE/SMALL PICTURE - JAMB



Title:		
1800 Series uPVC Window		
Drawing:		
Mullion connection details Operable/Fixed		
Drawn:	Date:	Scale: 1:2
AM	2021-09-30	
Drawing no.	Revision no.	
5	1	



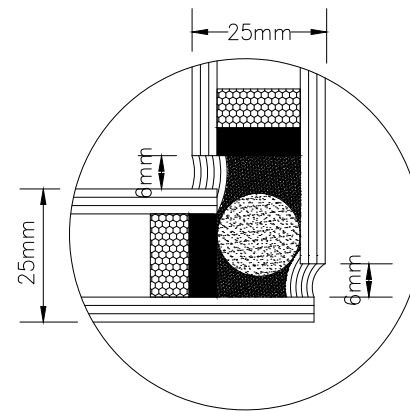
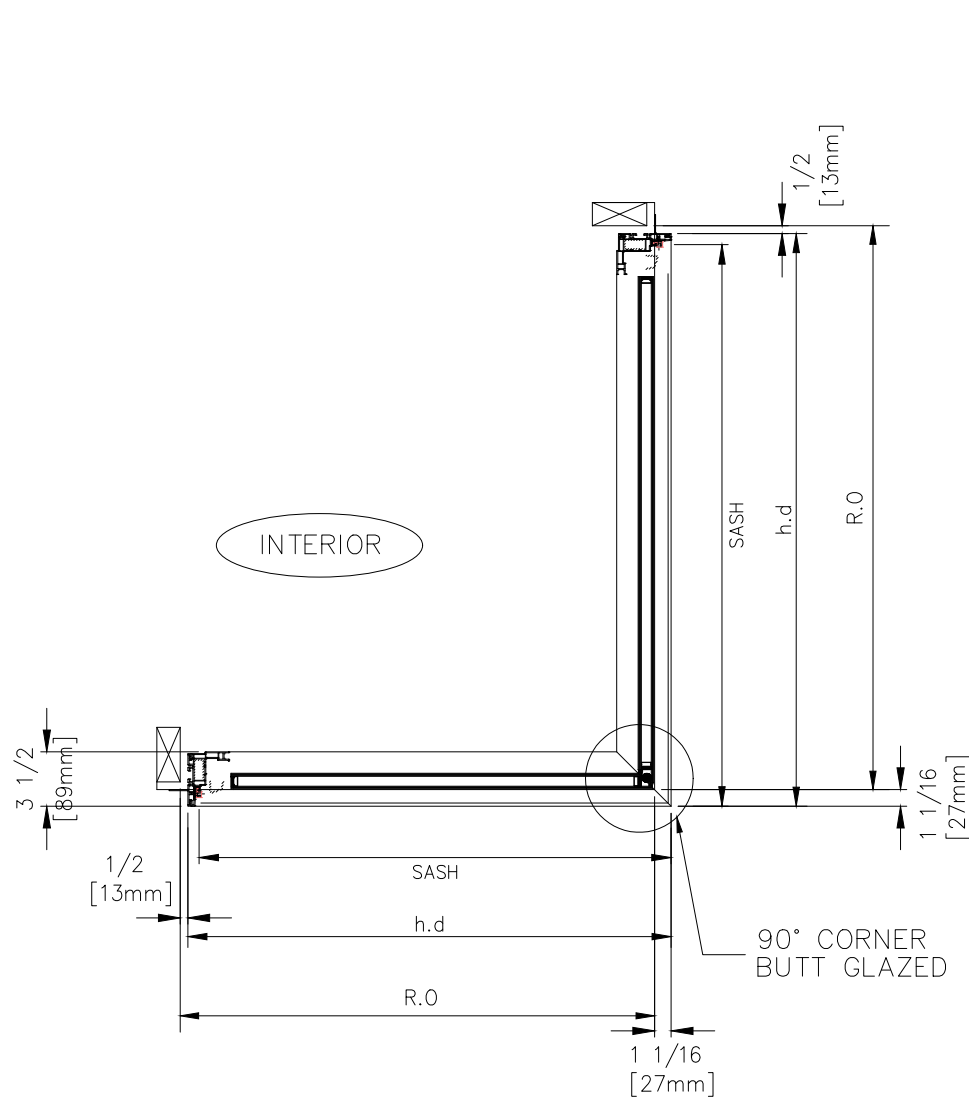
Note: Angled Steel Maximum Bent
Length = 10 feet (120") Length]



Title:
1800 Series uPVC Window

Drawing:
Angled Connection

Drawn: AM	Date: 2021-09-30	Scale: 1:2
Drawing no. 7	Revision no. 1	



BUTT END GLASS DETAIL

EXTERIOR

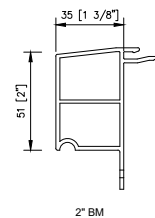
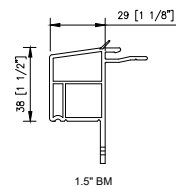


EUROLINE
WINDOWS

Title:
1800 uPVC Series

Drawing:
1800 SERIES
90° BUTT PICTURE WINDOW

Drawn: AM	Date: 2021-06-16	Scale: 1" = 1' 0"
Drawing no. 8	Revision no. 1	

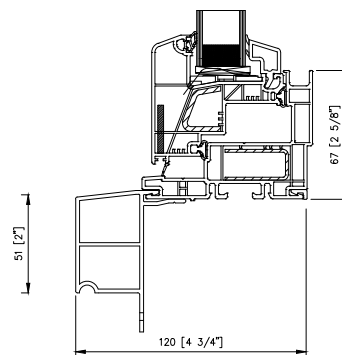
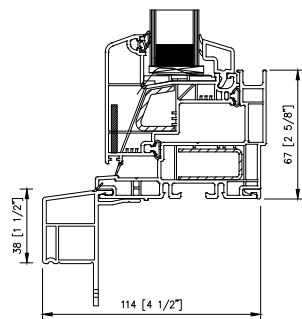


EXTERIOR

INTERIOR

EXTERIOR

INTERIOR



2 1800 OPERABLE + 1.5" BM - SILL

2 1800 OPERABLE + 2" BM - SILL



EUROLINE
WINDOWS

Title:

1800 Series uPVC Window

Drawing:

BRICKMOLD

Drawn:

AM

Date:

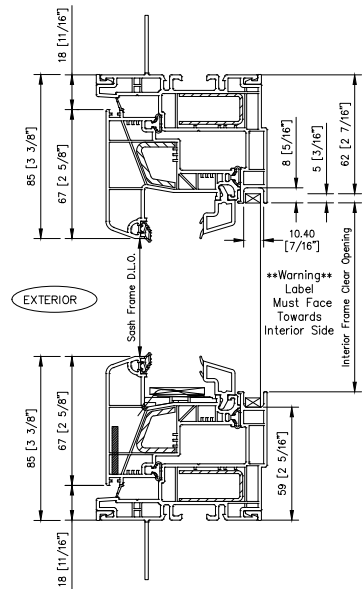
2021-09-30

Scale: 1:2

Drawing no.
g

Revision no.
1

1 1800 OPERABLE - HEAD



FlexScreen Canada Sizing - Various Methods

Basic Screen Size Formula = Overall Head Dimension Size - 4.75"

Basic Shapes: Squares & Rectangles only

Min. screen width = 229mm (9")
Max. screen width = 1448mm (57")
Max. screen height = 2210 (87")

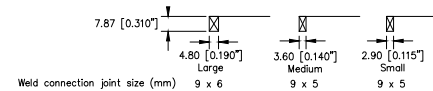
Screen Width & Height Size (mm) = "Sash Frame" D.L.O. + 49.50mm
Screen Width & Height Size (Inches) = "Sash Frame" D.L.O. + 1-15/16"

Screen Width & Height Size (mm) = "Interior Frame" Clear Opening + 12.75mm
Screen Width & Height Size (Inches) = "Interior Frame" Clear Opening + 1/2"

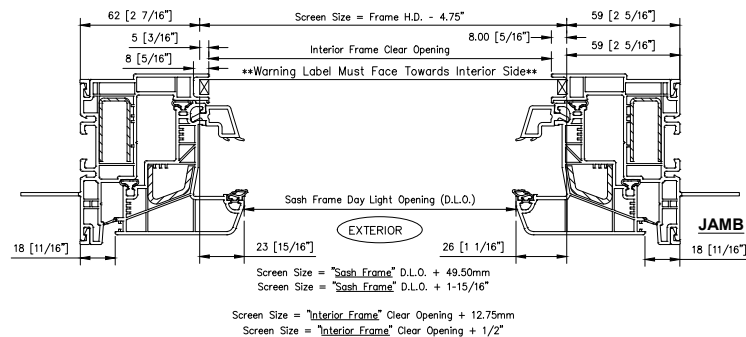
All standard Phifer insect screen fabric

FlexScreen Coated Spring Steel Wire Sizes - based on overall screen size and calculated by screen manufacturing equipment.

Note: Weld connection joint increases overall dimensions, however appears to be bent inwards towards center of screen to avoid interference fit.



2 1800 OPERABLE - SILL



8 1800 OPERABLE - JAMB

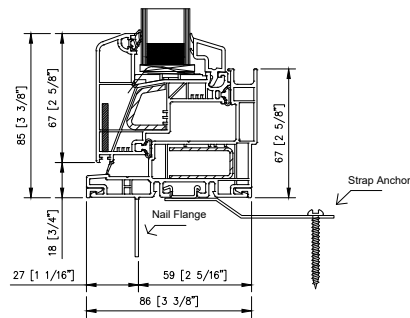
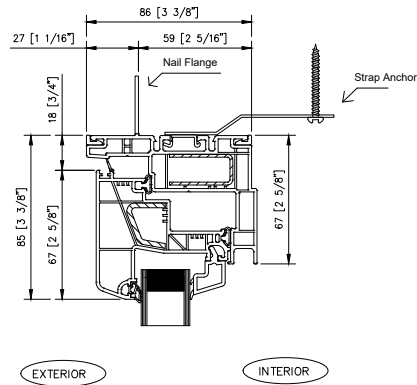


Title:
1800 Series uPVC Window

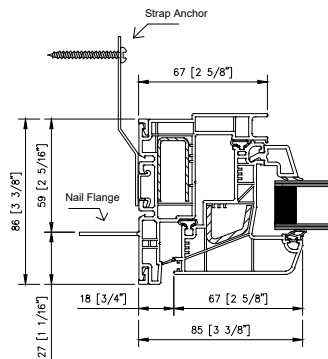
Drawing:
FlexScreen details and calculations

Drawn: AM	Date: 2021-09-30	Scale: 1:2
Drawing no. 10	Revision no. 1	

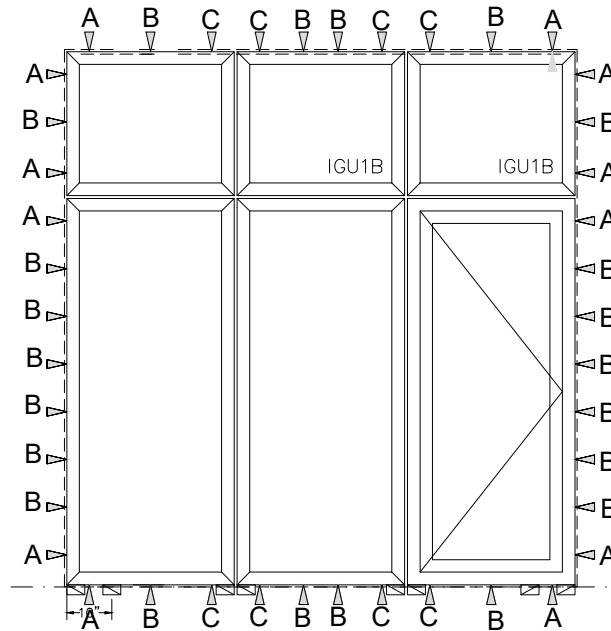
1 1800 OPERABLE - HEAD



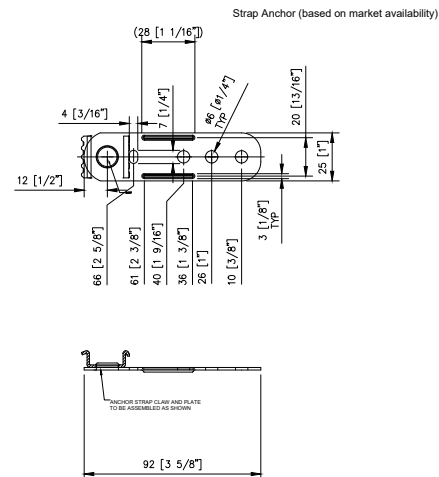
2 1800 OPERABLE - SILL




7 1800 OPERABLE - JAMB



- A. CORNER ANCHORS – SECURE APPROXIMATELY 5" FROM THE CORNERS, APPLIES TO CONNECTION CORNERS AS WELL.
- B. PERIMETER ANCHORS – MINIMUM OF 16" ON CENTER THEREAFTER
- C. MULLION AND TRANSOM ANCHORS – ALWAYS ANCHOR WITHIN 5" OF MULLION OR TRANSOM



 EUROLINE WINDOWS		
Title:		
1800 Series uPVC Window		
Drawing:		
Strap Anchors & Installation		
Drawn:	Date:	Scale: 1:2
AM	2021-09-30	
Drawing no.	Revision no.	
11	1	